

MALA's underground utility locating and concrete scanning training courses are the first of their kind in Australia.

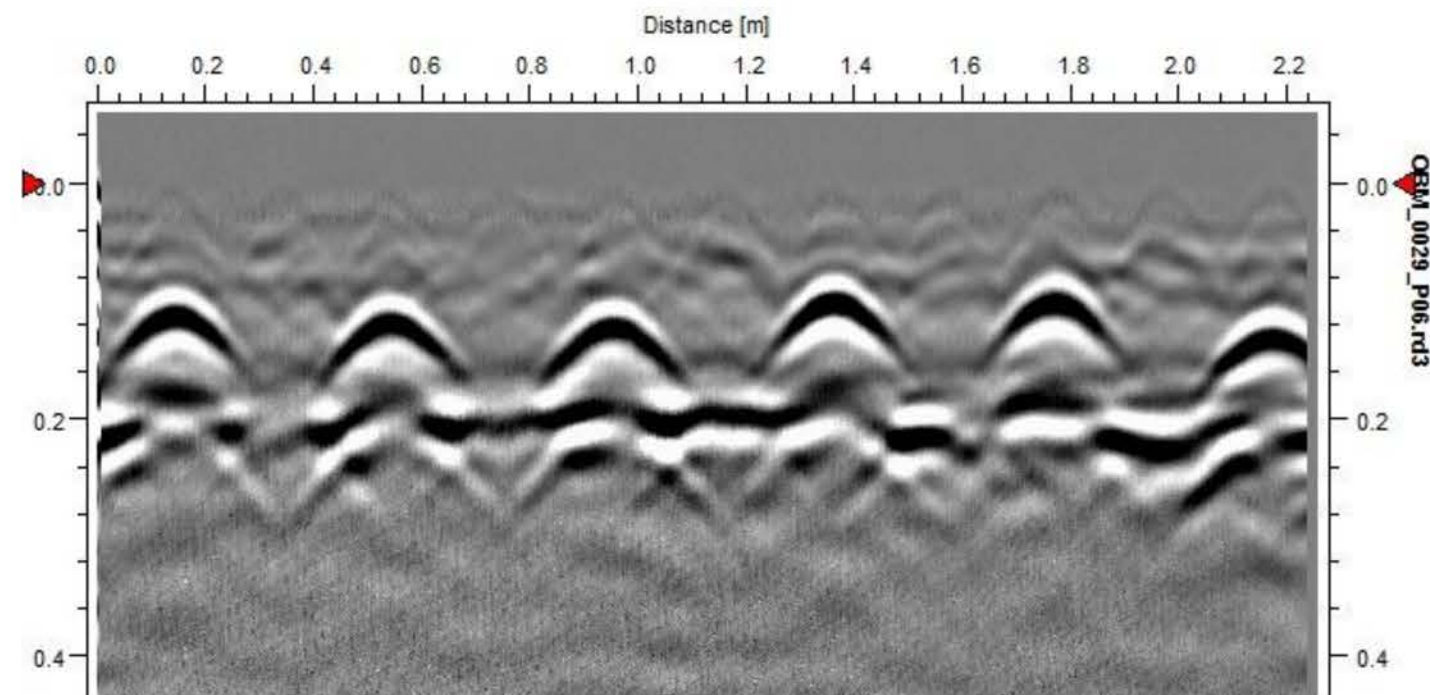
**Courses are practical, 'hands-on' and are designed to give participants the skills they need to become competent in the location and mapping of underground services and concrete scanning**

Underground utility locating and concrete scanning services are vitally important for ensuring safety in a large range of situations. MALA GPR Australia offers four different courses, from Basic to Advanced, to give participants the skills they need to become competent in the location and mapping of underground services and concrete scanning.

Courses focus on the theoretical, practical and technical skills required to use ground penetrating radar effectively. Training is open to all and past experience is not a pre-requisite for basic courses.

These qualifications have been designed by utility location specialists who recognise that current industry practices are inconsistent. These courses aim to raise the standards of those working in the utility locating and concrete scanning industries thereby creating safer working environments for all.

Additionally the MALA courses aim to support business development and market profile of locating and scanning companies by helping to provide a base of highly skilled and competent professionals.



Radargram from a concrete scan showing reinforcing reflections

## MALA Training Courses

### Ground Scanning BASIC

- Course Features
- Basic GPR Theory
  - Introduction to the Easy Locator instrument
  - Easy Locator operation and data acquisition
  - Scanning using 'locate and spray' method
  - Interpreting a 2D radargram

### Concrete Scanning BASIC

- Course Features
- Basic GPR Theory
  - 2D concrete scanning
  - Interpreting a 2D radargram

### Ground Scanning ADVANCED

- Course Features
- Advanced GPR Theory
  - Mapping and GPS intergrations
  - Post processing of data

### Concrete Scanning ADVANCED

- Course Features
- Advanced GPR Theory
  - 3D scanning and interpretation
  - Post processing of data

**These courses are designed for those who value professionalism, quality and expertise.**

#### Contact us

**MALA GPR Australia**

**+61 0438 278 902**

4- 105A Ben Boyd Road

Neutral Bay NSW 2089

AUSTRALIA

[www.malagpr.com.au](http://www.malagpr.com.au)

Email: [mads@malagpr.com.au](mailto:mads@malagpr.com.au)







MALA

**Contact us**

**MALA GPR Australia**

**+61 0438 278 902**

4- 105A Ben Boyd Road

Neutral Bay NSW 2089

AUSTRALIA

[www.malagpr.com.au](http://www.malagpr.com.au)

Email: [mads@malagpr.com.au](mailto:mads@malagpr.com.au)



**Ground Scanning and Concrete Scanning**

**- Training Courses -**