

The operation, and interpretations made based on the use, of this product is the sole responsibility of the operator. Please make sure to read the full disclaimer in the user manual before operating the product.

## Quick Guide

# MALÅ GeoDrone 80

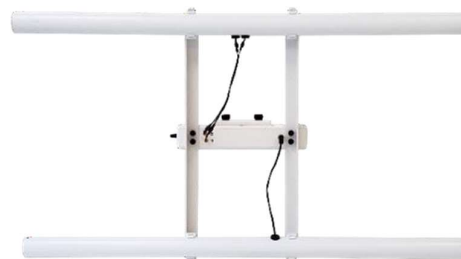
### Assembly and Connections

Make sure batteries are fully charged. One battery at a time can be changed even if the unit is on.



*The batteries are found under the hatch*

Assemble and connect the two antenna tubes to the main unit.



*The two antenna tubes assembled and connected to the radar unit.*

For better reception, use the GPS antenna extension cable (included).



*Connections for external GPS antenna and data cable together with Power On/Off on the main unit*

Attach the MALÅ GeoDrone 80 to the drone. Make sure this is firmly made, so you do not drop the GeoDrone 80 during flight.


Now you are ready to power up the MALÅ GeoDrone 80 and MALÅ Controller App or the GX Controller.






**Note:** Land the drone smooth and carefully so you do not harm the equipment.

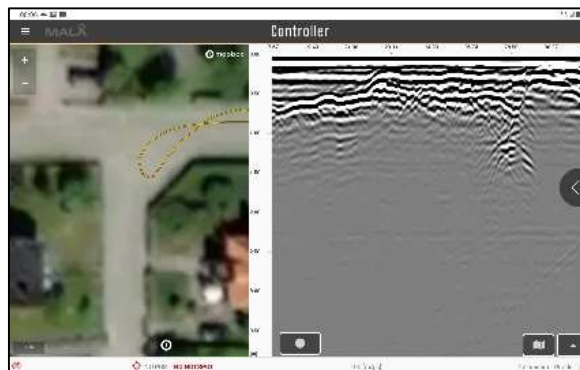
## Start measurements with MALÅ Controller App

Start MALÅ Controller App and select 2D or Project Manager to continue an existing project.

Make sure you have connection to the GeoDrone antenna .

Check the Measurement settings in the Main menu  and start the measurements by pressing  on the Measurement screen.

Press  to stop a profile. Data is automatically stored in the mobile device.





**Note:** During remote operation (when the GeoDrone antenna is out of Wi-Fi reach of the tablet), or if the Wi-Fi is disrupted when working locally, the in-built memory card in the antenna will store the GPR data and thus enabling the measurement to continue. To stop the measurement, the GeoDrone antenna must come back into Wi-Fi range of the tablet. Restore of missing traces will start automatically.

For more information, see *MALÅ Controller App User Guide*.


## Start measurements with GX Controller

Start the GX Controller and choose GeoDrone Project.

Make sure you have connection to the antenna .

Check the measurement settings  and start the measurements with .



Press  to stop a profile. Data is automatically stored in the GX Controller.

**Note:** During remote operation (when the GeoDrone antenna is out of Wi-Fi reach of the GX Controller), or if the Wi-Fi is disrupted when working locally, the in-built memory card in the antenna will store the GPR data and thus enabling the measurement to continue. To stop the measurement, the GeoDrone antenna must come back into Wi-Fi range of the GX Controller. Restore of missing traces will start automatically.

For more information, see *MALÅ GX Controller User Guide*.