

Quick Guide

MALÅ Easy Locator Core

Assembly and Start-up

- 1) Unfold the handle by pressing the black button and releasing the quick lock knob. When in upright position, secure the silver-colored knob on the mid part of the handle.



Press the button and pull the quick lock knob to unfold the handle. Secure the silver-coloured knob when in up-right position.

- 2) Attach a tablet for data acquisition (and if needed an external GNSS device).

Note! The rear left wheel contains an internal encoder for precise distance measurements.



The tablet is attached to the tablet holder on the top part of the handle. The GNSS device (on top of an extension pole) is attached to the GPS bracket with a quick release mechanism.

- 3) Make sure the batteries are charged. Open the battery compartment and insert the batteries.
- 4) Press the ON/OFF button to start the Easy Locator Core. The ON/OFF button will blink during start up. When the light is steady, the system is ready to be connected to the MALÅ Controller App.



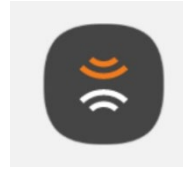
The batteries are found under the black lid. You can hot-swap the batteries, one battery at a time, during a measurement. This will keep you going without the need to shut off the equipment when changing the batteries during a survey.

Note! When powering OFF; press and hold the ON/OFF button.

Start measurements

- 5) Make sure that MALÅ Controller App is installed on your mobile device.

If using an external GNSS device, make sure it is connected by Bluetooth to your mobile device used for data acquisition.



APP-ENABLED



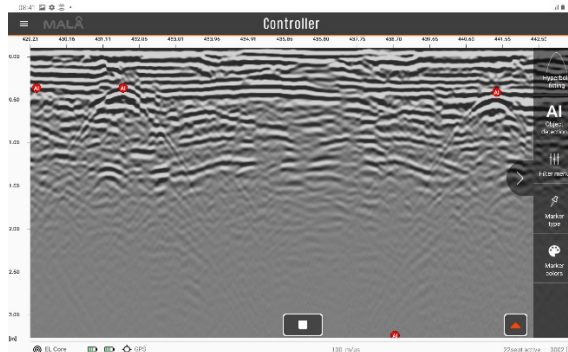
MALÅ Controller App can be downloaded from <https://www.guidelinegeo.com/product/mala-controller-app/> or by using the QR code.

- 6) Set up a mobile hotspot for communication between your mobile device and the Easy Locator Core.
- 7) Change the network name (SSID) to **MALAXxxxxxxx**, where xxxxxxxx will be replaced with the antenna serial number.
- 8) Change the password for the mobile hotspot to **mala0123**.



Label with information on serial number and QR code.

- 9) Open MALÅ Controller App and start measuring. You can either create a new project or continue an existing project. Measurements can be carried out both as 2D or 3D projects. Use the floating menus on the right-hand side for hyperbola fitting, AI, filters and markers.



Note! Use the MALÅ AI for easy real-time identification of hyperbolas.

- 10) Before starting your survey, make sure you have entered suitable measurement settings. Also make sure that the GNSS device settings are correct (if you are using such a device).
- 11) When the survey is complete, upload your data to MALÅ Vision (for safe and fast back-up as well as data processing, interpretation and reporting).

